


# F6

## Fetal & Maternal Monitor

Mounting Solutions 



# F6

## Fetal & Maternal Monitor

### Specification

Physical Characteristics		Display Specifications	
Dimensions:	347mm x 330mm x 126mm	Display:	10.1" color TFT-LCD
Weight:	Approx. 6 kg	Resolution:	RGB 800 (W) x480 (H)
Ultrasound		DECG	
Technique:	Ultrasound Pulse Doppler with autocorrelation	Technique:	Peak-peak detection technique
Pulse Repetition Rate:	2 KHz	DFHR Measurement Range:	30bpm ~ 240 bpm
Ultrasound Frequency:	(1.0±10%) MHz	Resolution:	1bpm
FHR Measurement Range:	50bpm ~ 240bpm	Accuracy:	±1 bpm
Resolution:	1bpm		
Accuracy:	±2 bpm		
/ob:	<10mW/cm <sup>2</sup>		
TOCO		IUP	
TOCO Range:	0% ~ 100%	Pressure Range:	0 ~ 100mmHg
Non-linear Error:	≤ ±10%	Non-linear Error:	≤ ±3 mmHg
Resolution:	1%	Resolution:	1%
Zero Mode:	Automatic / Manual	Zero Mode:	Automatic/Manual
AFM		Recorder	
Technique:	Pulsed Doppler ultrasound	Recording Paper:	Z-fold, 150/152mm thermo-sensitive paper
Range:	0 ~ 100 (%)	Recording Speed:	1/2/3 cm/min, 25 mm/sec for history data
Resolution:	1%		
Power Supply		Maternal Parameters for the F6 Express	
Operating Voltage:	100 - 240V~	Monitor the mother's ECG, HR/PR, NIBP, SpO <sub>2</sub> , and temperature	
Operating Frequency:	50/60Hz		
Battery:	14.8V/4400mAh rechargeable Li-ion battery		



# F6

## Fetal & Maternal Monitor



### < Foldable color TFT screen

F6 supports four viewing angles: 15°, 30°, 45°, 60°, that give better optic angles for care givers.



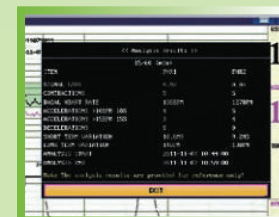
### < Quick setup and simplified workflow

Functional keys and knob provide various short-cuts to achieve functions for clinical use. The 'START' button could be configured to integrate patient info and printing. This could help the doctor to simplify the workflow and work with 1 button only.



### < Various printing options

F6 is compatible with 152 and 150 mm thermal printing paper in either American or International standard. The recording information includes patient info, FHR waveform, TOCO waveform, Fetal movement and so on.



### < Built-in Antepartum CTG Analysis

The antepartum CTG analysis provides objective and numerical assessment of CTG for the caregivers' reference and ensures easy access to read FHR patterns.

### < Maternal Parameters for the F6 Express

Monitor the mother's ECG, HR/PR, NIBP, SpO2, and temperature

### User-friendly design

- 10.1 foldable TFT color screen
- Compact and portable design
- Probe rack for easy positioning of the transducers

### Easy to Read & Operate

- Numeric and waveform display of FHR and TOCO
- Simplified workflow with various short-cuts
- Easy to use menu system ensures fast access to important functions

### Advanced FHR Detection Technology

- 1 MHz waterproof sensitive transducer
- Signals Overlap Verification to differentiate twins FHR
- FHR signal quality indicator helps optimize the probe position

### Powerful Data Management

- 60 hours built-in memory for seamless monitoring
- MFM-CNS network for remote monitoring
- Insight software for data management

